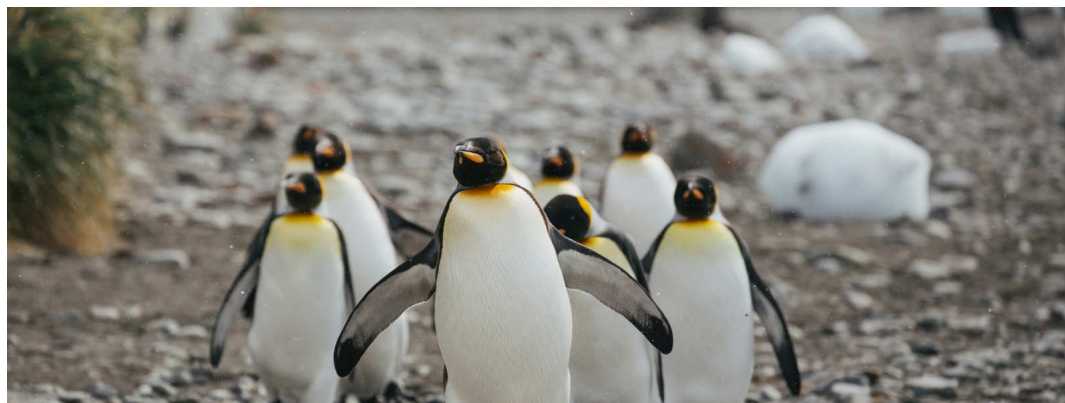


## ANTARCTICA - SPIRIT OF SHACKLETON | MS EXPEDITION



### INTRODUCTION

Experience vast penguin rookeries and seal colonies on this awe-inspiring voyage to Antarctica, South Georgia and the Falkland Islands aboard the M/S Expedition. This 21-day voyage highlights Ernest Shackleton's legend and his courageous exploration of Antarctica, visiting historical sites of past explorers and the wildlife rich island of South Georgia, Shackleton's final resting place. Antarctica is beyond comprehension and sure to amaze any traveller seeking a true adventure to the world's most remote wilderness.

### ITINERARY

#### DAY 1: Arrival in Ushuaia

Arrive in Ushuaia at any time. Arrival transfer is included. Enjoy the sights and sounds of the world's most southerly city. There will be a welcome desk in the lobby of the start hotel that will provide more specific information on your upcoming adventure. Please note that the first night in Ushuaia is on twin share basis. If you're travelling solo or have an odd number of travellers in your group and have not purchased a private cabin, you will be paired with another solo traveller of the same gender.



#### TRIP CODE

ACTSSOS

#### DEPARTURE

11/01/2026, 11/01/2027

#### DURATION

21 Days

#### LOCATIONS

Falkland Islands, South Georgia, Antarctica



## ANTARCTICA - SPIRIT OF SHACKLETON | MS EXPEDITION

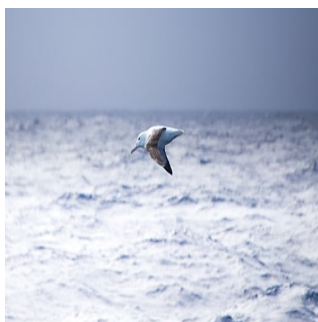
### DAY 2: Embarkation in Ushuaia

Enjoy a free morning in Ushuaia. Do any last minute shopping, explore the town, or visit the surrounding countryside. Embarkation on the MS Expedition begins in the afternoon at the port in Ushuaia. Once onboard enjoy the evening sailing through the Beagle Channel. Your Expedition Leader will give an expedition overview outlining what the specific plans are for the trip. \*\*Expedition travel can be full of surprises! While it is our intention of adhere to the itinerary described below, there is a certain amount of flexibility built into the itinerary and on occasion it may be necessary, or desirable to make alterations.



### DAY 3: Drake passage & South Shetland - Day 3 & 4

The adventure begins with an 1000km (600mi) crossing of the passage named in honour of the 16th-century English sea captain and privateer, Sir Francis Drake. Take in daily lectures from the expedition team and keep an eye out for the first sightings of icebergs, whales and albatross following in the MS Expedition's wake. The Expedition is at home in this part of the Southern Ocean, known for the unimpeded never ending fetch of the winds that encircle the Antarctic. As the Expedition crosses the passage there will be time to become acquainted with the ship and frequent the common areas that include the lounge, dining hall, library and lecture hall where we meet our guides, ship's crew and expedition staff. Begin lectures and information sessions to learn the extraordinary human and natural history of the Antarctic region.



#### TRIP CODE

ACTSSOS

#### DEPARTURE

11/01/2026, 11/01/2027

#### DURATION

21 Days

#### LOCATIONS

Falkland Islands, South Georgia, Antarctica



## ANTARCTICA - SPIRIT OF SHACKLETON | MS EXPEDITION

### DAY 5: Antarctica & South Shetland - Day 5 to 9

Experience some of the most unique wildlife and awe-inspiring scenery in the world while setting foot on the Antarctic continent. Weather and ice conditions permitting, our goal is to attempt memorable shore landings daily and encounter Gentoo, Chinstrap, and Adélie penguin rookeries; Weddell, crabeater, and leopard seals; and orca, humpback, and minke whales in the cold Antarctic waters. The peninsula also has a remarkable human history. Welcome to the Great White Continent! Over the next few days, the Expedition will navigate southwards making stops in the South Shetland Islands then through the Bransfield Strait and to the Antarctic Peninsula. Our goal is to attempt shore landings daily while we navigate through the area but our itinerary and daily schedule will be based on the local weather and ice conditions that we encounter. The Antarctic Peninsula and the South Shetland Islands abound with wildlife activity. Take plenty of time to enjoy the sheer beauty and the breathtaking scenery of ice-choked waterways, blue and white icebergs, impressive glaciers and rugged snow-capped mountains. The Peninsula also has a remarkable history and, during the voyage, opt to learn about some of the most important and dramatic expeditions to this remote corner of the world.



#### TRIP CODE

ACTSSOS

#### DEPARTURE

11/01/2026, 11/01/2027

#### DURATION

21 Days

#### LOCATIONS

Falkland Islands, South Georgia, Antarctica



### DAY 10: Antarctic Peninsula & Scotia Sea - Day 10 & 11

Sail for two days, retracing Shackleton's route from Elephant Island and the Antarctic Peninsula towards South Georgia. These waters are rich with nutrients and the long summer days provide the ingredient that is missing most of the year. The result is a complex food chain topped by several species of whales, seals, and seabirds.



## ANTARCTICA - SPIRIT OF SHACKLETON | MS EXPEDITION

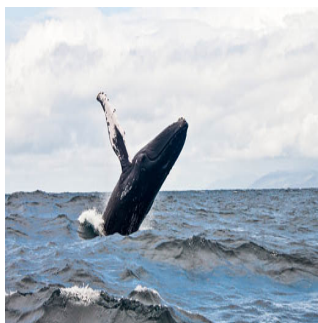
### DAY 12: Scotia Sea & South Georgia - Day 12 to 15

Home to many interesting sights (including the grave of polar explorer Ernest Shackleton), South Georgia has several former whaling stations and boasts plenty of wildlife. Visiting a huge colony of king penguins is a major highlight of this part of the journey. Weather permitting, spend four full days exploring the island. Weather permitting, four full days will be spent exploring this island. On nearby islands look out for the wandering albatross in their nesting grounds.



### DAY 16: At Sea in the Southern Ocean - Day 16 to 17

Sailing west, set course for the Falkland Islands. Days at sea are filled with lectures to prepare for landings. Watch for the many whales that inhabit these waters.



### DAY 18: Falkland Islands - Day 18 & 19

The Falkland Islands provide a rare opportunity to witness the biological diversity and extraordinary scenery of the southern islands. Penguins are abundant here, and the Falklands have the largest black-browed albatross colony in the world. In Stanley, meet the hardy local inhabitants whose colourful houses provide contrast to the long, dark winters. Enjoy the last opportunity to see penguins, including the Magellanic, rockhopper, gentoo, and king penguins. With a little luck, spot elephant seals, sea lions, king cormorants, black-browed albatross, skuas, night herons, giant petrels, striated caracaras and of course sheep.



### DAY 20: At Sea

Reflect on a memorable adventure and take in some final lectures en route back to Ushuaia. Begin the journey to the home port of Ushuaia. Review the highlights of the Antarctic experience with the lecturers and staff.



#### TRIP CODE

ACTSSOS

#### DEPARTURE

11/01/2026, 11/01/2027

#### DURATION

21 Days

#### LOCATIONS

Falkland Islands, South Georgia, Antarctica





# ANTARCTICA - SPIRIT OF SHACKLETON | MS EXPEDITION

DAY 21: Disembarkation in Ushuaia

Our adventure comes to a close. Have a final breakfast on the ship before saying goodbyes before disembarking in Ushuaia in the morning.



## TRIP CODE

ACTSSOS

## DEPARTURE

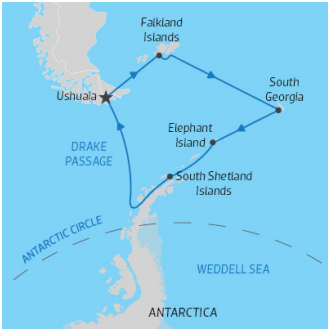
11/01/2026, 11/01/2027

## DURATION

21 Days

## LOCATIONS

Falkland Islands, South Georgia, Antarctica



## INCLUSIONS & DETAILS

Accommodation	Hotel & Cabin on board a ship
---------------	-------------------------------

ANTARCTICA - SPIRIT OF SHACKLETON | MS EXPEDITION

INCLUSIONS

Accommodation on board during your voyage  
 Pre night accommodation in Ushuaia hotel on twin share basis  
 Group arrival and departure transfers in Ushuaia  
 All Zodiac excursions, as per itinerary, guided by our Expedition Team  
 English-speaking expedition team  
 Expedition parka to keep  
 Rubber boots on loan (USA sizes 4 - 16)  
 Briefings and lectures by our Expedition Leader and Team  
 English-speaking Expedition Team  
 All meals whilst on board  
 Free tea and coffee available 24 hours  
 Taxes and landing fees

Inclusions

EXCLUSIONS

International or internal flights  
 Extra excursions and optional activities not mentioned in the itinerary  
 Single room supplements  
 Meals not on board the ship  
 Beverages (other than coffee and tea)  
 Tips for the crew (we recommend USD 15 per person per day)  
 Personal expenses such as laundry, bar and onboard communication  
 Mandatory waterproof pants for Zodiac landings and excursions  
 Travel and medical insurance (compulsory)  
 Pre or post cruise travel expenses  
 Visa (if applicable) and passport fees  
 Fuel surcharge may be applied to all bookings  
 Anything not mentioned under 'Inclusions'

Difficulty Rating 2 (light adventure)

Single Surcharge Willing to share available for no additional cost (Category 1, 2 and 3 cabins only). Surcharge applies for solo use cabin, contact us for pricing. Subject to availability.

Notes Prices are based on per person, and may be based off quad/triple/ or twin share cabins\* (please contact us for more details)  
 Prices are correct at time of publishing but are subject to change at any time.  
 Itinerary is subject to change depending on weather and ice conditions.

Price Dependent upon Departure Date, Fuel Surcharges, Cabin Category, Currency Fluctuations, Seasonality & Availability.

TRIP CODE

ACTSSOS

DEPARTURE

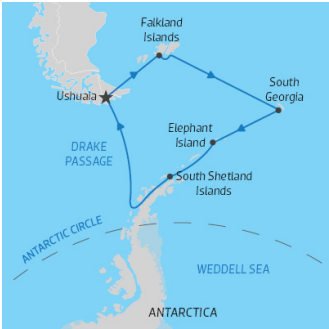
11/01/2026, 11/01/2027

DURATION

21 Days

LOCATIONS

Falkland Islands, South Georgia, Antarctica



## SUSTAINABILITY

### TRIP CODE

ACTSSOS

### DEPARTURE

11/01/2026, 11/01/2027

### DURATION

21 Days

### LOCATIONS

Falkland Islands, South  
Georgia, Antarctica

