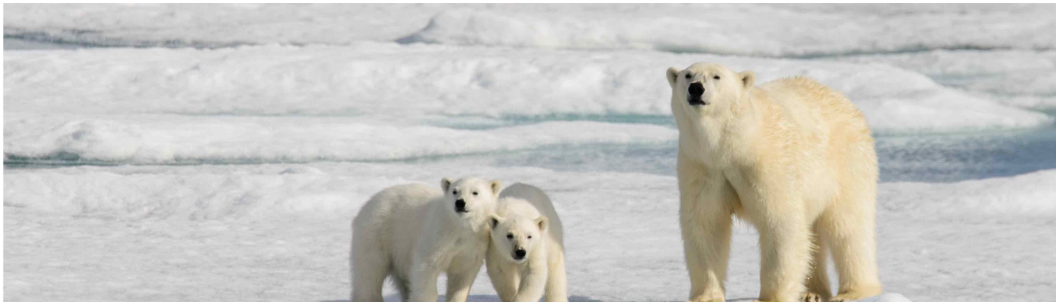


SPITSBERGEN - NORTH SPITSBERGEN EXPLORER | PLANCIUS



INTRODUCTION

Start your North Spitsbergen cruise with a stroll through the old town of Longyearbyen, and then accompany our expedition to the northern part of the island to see the breathtaking scenery, the enormous number of seabirds, and, of course, the polar bear, who is the main attraction.

Please Note: All itineraries are for guidance only. Programs may vary depending on ice, weather, and wildlife conditions. Landings are subject to site availabilities, permissions, and environmental concerns per AECO regulations. Official sailing plans and landing slots are scheduled with AECO prior to the start of the season, but the expedition leader determines the final plan. Flexibility is paramount for expedition cruises. The average cruising speed of our vessel is 10.5 knots.

ITINERARY

DAY 1: Embark in Longyearbyen

You touch down in Longyearbyen, the administrative center of Spitsbergen, the largest island of the Svalbard archipelago. Enjoy strolling around this former mining town, whose parish church and Svalbard Museum make for fascinating attractions. Though the countryside appears stark, more than a hundred species of plant have been recorded in it. In the early evening the ship sails out of Isfjorden, where you might spot the first minke whale of your voyage.



TRIP CODE

ACOWPBI

DEPARTURE

21/06/2026

DURATION

8 Days

LOCATIONS

Svalbard



SPITSBERGEN - NORTH SPITSBERGEN EXPLORER | PLANCIUS

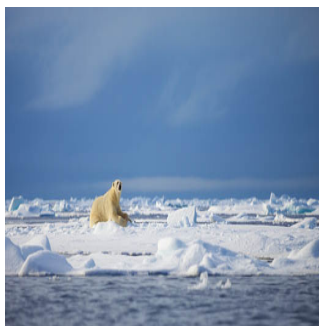
DAY 2: Sailing to Raudfjorden

Sailing to Raudfjorden, on the north coast of Spitsbergen, you take in an expansive fjord spilling with glaciers – and maybe even visited by ringed and bearded seals. The cliffs and shoreline of this fjord also support thriving seabird colonies, rich vegetation, and the possibility of polar bears.



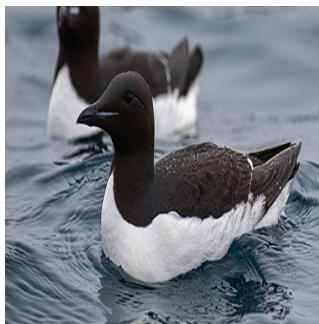
DAY 3: Monaco Glacier

Depending on the weather, you could sail into Liefdefjorden and cruise within sight of the 5-kilometer-long (3.1 miles) face of the precipitous Monaco Glacier. The waters in front of this glacier are a favorite feeding spot for thousands of kittiwakes, and the base of the ice is a popular polar bear hunting ground. If ice conditions prevent sailing here early in the season, an alternate route along the west coast of Spitsbergen can be implemented.



DAY 4: Hinlopen Strait

Today you sail into Hinlopen Strait, home to bearded seals, ringed seals, and polar bears. At the entrance there is even the possibility to spot blue whales. After cruising among the ice floes of Lomfjordshalvøya in the Zodiacs, you can view the bird cliffs of Alkefjellet with their thousands of Brünnich's guillemots. On the east side of Hinlopen Strait, you may attempt a landing on Nordaustlandet. Here reindeer, pink-footed geese, and walruses are likely sights. You can take an alternate route if ice prevents entry into Hinlopen.



DAY 5: Nordaustlandet

The northernmost point of your voyage may be north of Nordaustlandet, in the Seven Islands. Here you reach 80° north, just 870 km (540 miles) from the geographic North Pole. Polar bears inhabit this region, so the ship may park for several hours among the pack ice before wheeling around west again.



TRIP CODE

ACOWPBI

DEPARTURE

21/06/2026

DURATION

8 Days

LOCATIONS

Svalbard



SPITSBERGEN - NORTH SPITSBERGEN EXPLORER | PLANCIUS

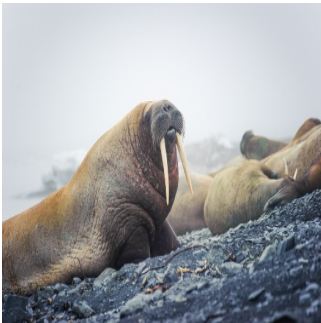
DAY 6: Kongsfjorden

While retracing your route west, keep watch for polar bears and elusive Greenland (bowhead) whales. About 40 nautical miles west of Spitsbergen, you sail the edge of the continental shelf. Here fin whales forage during the summer in the upwelling zones (where cold, nutrient-rich water wells up from below the sea’s surface) that run along the Spitsbergen banks. At the mouth of Kongsfjorden, you have a good chance of sighting minke whales.



DAY 7: Forlandsundet

Walrus sometimes haul out in Forlandsundet, your next stop. Alternatively, you might sail into St. Johns Fjord or south to the mouth of Isfjorden, landing at Alkhornet. Seabirds nest on these cliffs, Arctic foxes search below for fallen eggs and chicks, and reindeer graze the sparse vegetation. You arrive in Longyearbyen later at night.



DAY 8: Disembark in Longyearbyen

Every adventure, no matter how grand, must eventually come to an end. You disembark in Longyearbyen, taking home memories that will accompany you wherever your next adventure lies.



TRIP CODE

ACOWPBI

DEPARTURE

21/06/2026

DURATION

8 Days

LOCATIONS

Svalbard



INCLUSIONS & DETAILS

Accommodation	Cabin on board a ship
----------------------	-----------------------

SPITSBERGEN - NORTH SPITSBERGEN EXPLORER | PLANCIUS

INCLUSIONS

All meals on board including snacks, coffee and tea.
 Accommodation onboard the Plancius in booked cabin category
 Onboard lecture program from Expeditions Team and Naturalists
 All applicable shore excursions and Zodiac cruising (except paid adventure options with cost)
 Use of rubber boots & snowshoes
 Transfers and baggage handling between the airport, hotels and ship only for those passengers on the group flights to and from Longyearbyen.
 All miscellaneous service taxes and port charges throughout the programme.
 AECO fees and governmental taxes.
 Comprehensive pre-departure material.
 Access to 1.5 GB of free internet connectivity per person, which resets every 24 hours. Supplementary vouchers available to purchase on onboard. Subject to satellite coverage

Inclusions

EXCLUSIONS

International or internal flights unless specified
 Airport transfers, taxes and excess baggage charges unless specified
 Meals other than those specified in the pre-departure information
 Pre and post land arrangements
 Visa & passport fees (if applicable)
 Travel insurance (compulsory)
 Fuel surcharge may be applied to all bookings
 Additional optional activities
 Tobacco, alcoholic or beverages (other than coffee and tea)
 Meals ashore
 Personal expenses such as laundry & bar
 Miscellaneous extras
 Gratuities for the crew (guidelines will be provided)
 Government arrival or departure taxes (if applicable)

Difficulty Rating 2 (light adventure)

Single Surcharge Subject to availability upon request. No single supplement will apply if willing to share in selected cabins. Please contact us for more details.

TRIP CODE

ACOWPBI

DEPARTURE

21/06/2026

DURATION

8 Days

LOCATIONS

Svalbard



SPITSBERGEN - NORTH SPITSBERGEN EXPLORER | PLANCIUS

Notes	<p>Prices are based on per person, and may be based on quad/triple/twin share.</p> <p>Prices are correct at time of publishing but are subject to change at any time.</p> <p>Itinerary is subject to change depending on weather and ice conditions.</p>
Price Dependent upon	<p>Departure date, fuel surcharges, cabin category, currency fluctuations, seasonality and availability.</p>

SUSTAINABILITY

TRIP CODE
ACOWPBI
DEPARTURE
21/06/2026
DURATION
8 Days
LOCATIONS
Svalbard
