

ANTARCTICA - HIGHLIGHTS OF SOUTHERN SPRING | OCEAN VICTORY



INTRODUCTION

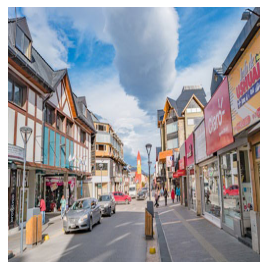
The legendary White Continent has fascinated explorers for centuries, attracting modern adventurers with its breathtaking landscapes, colossal icebergs, and incredible wildlife. Embark on an exhilarating 10-day journey to the Antarctic Peninsula to witness the Last Continent's vibrant springtime days up close.

Begin an unforgettable journey from Ushuaia, Argentina, through the Drake Passage to the South Shetland Islands and the Antarctic Peninsula. Explore stunning inlets, bays, and the Gerlache Strait, with its towering peaks and glittering ice cliffs. Experience Zodiac landings to see penguin rookeries, breathtaking landscapes, and set foot on historical sites. Cruise among massive icebergs, whales, and seals in scenic areas. Early spring offers unique sights like penguins building nests and engaging in mating behavior, along with pristine, snow-covered scenery and beautiful springtime sunsets over the ice mountains. The expedition leader and captain will work tirelessly around wind, sea, and ice conditions will determine the precise locations we visit to maximize every opportunity to explore the White Continent, making this a truly remarkable adventure.

ITINERARY

DAY 1: Arrive Ushuaia

After a friendly welcome at the airport and a transfer to your included hotel, take some time to unwind or explore the southernmost city in the world, Ushuaia. Our evening briefing is your opportunity to ask questions and meet some of your fellow explorers.



TRIP CODE

ACABHSP

DEPARTURE

13/11/2026

DURATION

10 Days

LOCATIONS

Antarctica, Antarctic Peninsula



ANTARCTICA - HIGHLIGHTS OF SOUTHERN SPRING | OCEAN VICTORY

DAY 2: Embarkation in Ushuaia

This morning, enjoy some time to explore the quaint city or local countryside. Alternatively, consider a day trip off the beaten path to the raw, natural archipelago of Tierra del Fuego. It's a hiker's paradise with rugged snow-capped mountains, glaciers, flower-filled meadows and boggy quagmires. In the afternoon, we board our ship. Our journey begins as we navigate through the calms of Beagle Channel, a strait in the Tierra del Fuego Archipelago.



DAY 3: Crossing the Drake passage - Day 3 & 4

Sailing onward, we cross the famed Drake Passage - the body of water separating Patagonia and the Antarctic Peninsula. The Drake Passage is known for rollicking conditions and strong westerly winds, nicknamed the Roaring Fifties. While this passage may be challenging, you can rest comfortably aboard our expedition vessels, which are purpose-built with stabilizers, powerful engines and manned by a highly-qualified crew. The most spirited sailors consider Drake Passage a lifetime achievement - and you will complete the crossing twice! Our days in the Drake Passage will be put to good use preparing for our arrival in Antarctica - your Expedition Leader will brief you comprehensively on how to stay safe and minimise your impact on this precious wilderness, as well as briefing you thoroughly on our plans for our time spent exploring, including hints and tips for wildlife watching. Our dedicated Expedition Team will assist you to biosecure your clothing and equipment (a vital process to protect Antarctica's delicate ecology), as well as sharing tailored lectures on Antarctic exploration history, wildlife, geology, glaciology and more! We will cross into the Antarctic Convergence on the third day of our voyage - watch the mercury plummet as we sail southwards into Antarctic waters, an abrupt cooling that marks the intersection of Antarctic waters with the warmer waters of the Atlantic and Pacific Oceans. As the sea cools, wildlife multiplies; these are some of the most biologically productive water on Earth, so expect to see petrels, albatrosses and potentially penguins, seals and whales in abundance. Weather permitting, we may be able to make landfall in the South Shetland Islands (a small but spectacular archipelago to the north of the Antarctic Peninsula) on the afternoon of our second day in the Drake Passage, marking the start of our exploration on the Last Continent.



TRIP CODE

ACABHSP

DEPARTURE

13/11/2026

DURATION

10 Days

LOCATIONS

Antarctica, Antarctic Peninsula




ANTARCTICA - HIGHLIGHTS OF SOUTHERN SPRING | OCEAN VICTORY

DAY 5: Antarctica & South Shetland Islands - Day 5 to 7

Over the next days, we will enjoy a safe and exciting Antarctic experience explorers of yesteryear could only dream of. Our Antarctic adventure begins in the South Shetland Islands. This chain of rugged rocks marks the northernmost point of Antarctica, and the most exposed to the fury of the Southern Ocean. Because of this, it is also one of the richest in terms of wildlife, with large Gentoo and Chinstrap Penguin colonies, and an abundance of large seabirds such as predatory Giant Petrels. The ice-clad mountains of Livingstone, Greenwich and King George Islands give us a glimpse of what is to come as we venture further south. Landing sites which may be visited in the South Shetland Islands include the black steaming sands and rusting ruins of Deception Island (an active volcanic crater), the bustling penguin colonies of Aitcho and Half Moon Islands, or the old sealers' anchorage of Yankee Harbour. The following days will be spent exploring further south on the Antarctic Peninsula in the Gerlache Strait region. This region is typically icy, so our exact route will be subject to careful planning by the Expedition Leader and Captain - however we will aim to visit a range of sites which showcase the best of this staggeringly beautiful region. Consisting of the 'spine' of the Antarctic Peninsula and a large number of glaciated and mountainous islands, the Gerlache Strait is what comes to mind when most people think of Antarctica. Visiting Antarctica in the early Spring offers exceptional experiences. Watch penguins come ashore and begin to build their nests and compete for mates. Marvel at the winter sea ice which mantles these frigid seas, stretching as far as the eye can see, and experience the power of an ice-class vessel push through this marine mosaic. Watch miraculous sunsets (which can't be seen in the height of summer) in an alien landscape. With heaps of fresh snow, we expect excellent opportunities for snowshoeing and camping in Antarctica, with springtime offering the best possible conditions. Wherever we go on the Antarctic Peninsula, endemic wildlife, tantalising history and breathtaking natural beauty abound. While wind, ice and sea conditions will dictate our precise destinations and timings, our plans will be explained to guests during regularly scheduled evening briefings with your Expedition Leader; these nightly sessions are also an excellent opportunity to hear from your knowledgeable Expedition Team, who will explain and expand on our experiences to ensure guests get the most from their voyage. On Antarctica, all human activity is subject to the whims of Mother Nature. While we will make every possible effort to maximise opportunities for exploration off the vessel, the safety of our guests and crew is our top priority. We therefore ask all our guests to join the expedition spirit and be flexible - harsh weather offers the opportunity to expand your knowledge of Antarctica with lectures from our expert Expedition Team, or to enjoy the superlative comfort of our vessels, be it wine-tasting, relaxing in the hot tubs, or recharging with a relaxing massage in our Spa.



TRIP CODE
ACABHSP
DEPARTURE
13/11/2026
DURATION
10 Days
LOCATIONS
Antarctica, Antarctic Peninsula


ANTARCTICA - HIGHLIGHTS OF SOUTHERN SPRING | OCEAN VICTORY

DAY 8: Crossing the Drake Passage - Day 8 & 9

We eventually depart Antarctica, and spend two days at sea on our way northwards back across the infamous Drake Passage towards the more welcoming shores of the Beagle Channel and Ushuaia, Argentina. During our time at sea, a variety of activities will be arranged on board to provide our guests with the chance to reflect on their voyage. Relax with an expertly crafted cocktail in the Nordic Bar in the company of new friends, soak up the knowledge and passion of our Expedition Team during lectures in the Shackleton Lounge, or simply enjoy the flight of the albatross which accompany us northwards. During your last evening onboard, join the Captain and Officers for the Farewell Cocktail Party, followed by a presentation of photos and video by our onboard photographer - the ideal opportunity to re-live your Antarctic adventure.



DAY 10: Disembark in Ushuaia

On the morning of the final day of our voyage, we will arrive back at the pier of Ushuaia, Argentina. Trees, grass and a busy city may seem strange to you after the white wilderness of Antarctica! After a hearty breakfast, it is time to bid a fond farewell to the Crew and Expedition Team, and descend the gangway back to dry land with memories of the voyage of a lifetime. Please note: Cruise itinerary is subject to change depending on weather conditions, ice conditions and other factors.



TRIP CODE

ACABHSP

DEPARTURE

13/11/2026

DURATION

10 Days

LOCATIONS

Antarctica, Antarctic Peninsula




INCLUSIONS & DETAILS

Accommodation

Cabin on board ship

ANTARCTICA - HIGHLIGHTS OF SOUTHERN SPRING | OCEAN VICTORY

Inclusions	<h2>Inclusions</h2> <p> Stateroom accommodation on board during your voyage Embarkation shuttle transfer to the vessel from Ushuaia city centre Shuttle transfer after disembarkation from the ship to Ushuaia city centre or airport All Zodiac excursions, as per itinerary, guided by our Expedition Team Expedition parka Rubber boots loan scheme Briefings and lectures by our Expedition Leader and Team English-speaking Expedition Team Full board on the ship - breakfast, lunch, dinner and snacks Complimentary house wine, beer and soda at dinner (selected labels and brands, served at our a-la-carte dinners) Free tea and coffee available 24 hours Taxes and landing fees Special photo workshops Welcome and Farewell Cocktail Parties Digital visual journal link distributed after the voyage, including voyage log, gallery, species list and more! </p>
	<h2>EXCLUSIONS</h2> <p> International or internal flights Extra excursions and optional activities not mentioned in the itinerary Single room supplement and stateroom upgrades Meals not on board the ship Beverages (other than coffee and tea) Tips for the crew (we recommend USD 16 per person per day) Personal expenses (e.g. Polar Spa services, Ocean Boutique purchases) Mandatory waterproof pants for Zodiac landings and excursions Laundry, bar, and other personal charges, unless specified Travel and medical insurance (compulsory) Pre or post cruise travel expenses Visa (if applicable) and passport fees Fuel surcharge may be applied to all bookings Anything not mentioned under 'Inclusions' </p>
	<p>Difficulty Rating</p> <p>2 (light adventure)</p>
	<p>Single Surcharge</p> <p>Available on request. No single supplement if willing to share (select cabins only). Contact us for more details.</p>

<p>TRIP CODE</p> <p>ACABHSP</p>
<p>DEPARTURE</p> <p>13/11/2026</p>
<p>DURATION</p> <p>10 Days</p>
<p>LOCATIONS</p> <p>Antarctica, Antarctic Peninsula</p>


ANTARCTICA - HIGHLIGHTS OF SOUTHERN SPRING | OCEAN VICTORY

Notes	<p>Prices are based on per person, and may be based off quad/triple/ or twin share cabins* (please contact us for more details)</p> <p>Prices are correct at time of publishing but are subject to change at any time.</p> <p>Itinerary is subject to change depending on weather and ice conditions.</p>
Price Dependent upon	<p>Departure Date, Fuel Surcharges, Cabin Category, Currency Fluctuations, Seasonality & Availability.</p>

SUSTAINABILITY

TRIP CODE
ACABHSP
DEPARTURE
13/11/2026
DURATION
10 Days
LOCATIONS
Antarctica, Antarctic Peninsula
