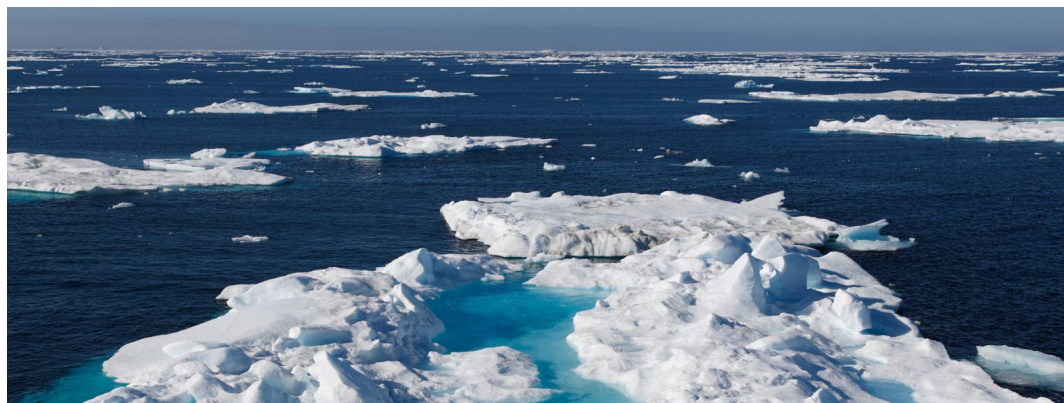


THE ARCTIC - INTO THE NORTHWEST PASSAGE | EXPLORIS ONE



INTRODUCTION

Embark on an epic 17-day journey through the Northwest Passage, also known as Inuit Nunangat, aboard the spacious Exploris One. This voyage immerses you in vibrant Inuit culture, exploring their language, arts, cuisine, music, and traditions through integrated educational programs. Engage with Inuit artists, educators, and community members, participate in traditional games, sample local foods, and explore the stunning Arctic landscape. Marvel at the enormous icebergs at Ilulissat Icefjord, a UNESCO World Heritage Site, and witness the fastest-calving glacier in the world. Navigate pristine Arctic waterways, spotting wildlife such as polar bears, seabirds, whales and other marine mammals. Visit the historic Beechey Island, learn about the ill-fated Franklin Expedition, and hear stories of European explorers and Inuit travelers. Excursions include visits to Nunavut's communities, hiking, photography, bird watching, and lectures from onboard experts, offering a profound connection to the land, culture, and history of the Arctic.

NOTE: Itinerary is subject to change depending on weather & ice conditions

Optional charter flight information and cost:

Northbound Charter Flight Toronto, ON to Nuuk, Greenland. Early-morning departure. Price: \$1,595 USD. *(Cost subject to change)*

Southbound Charter Flight: Kugluktuk (Coppermine), NU, Canada to Yellowknife, NU, Canada. Evening arrival. Price: \$1,100 USD. *(Cost subject to change)*

Please note the charter flight costs are **NOT** included in the advertised cruise price. Please contact your booking agent to include charter flights.

Charter flight packages are highly recommended for this region, even for European-based guests, due to the variable ice conditions in the high Canadian Arctic. This is

TRIP CODE

ACADEINP

DEPARTURE

26/08/2026

DURATION

17 Days

LOCATIONS

Greenland & Canadian Arctic



THE ARCTIC - INTO THE NORTHWEST PASSAGE | EXPLORIS ONE

especially true for the western end of the Northwest Passage trips. If the operator and captain decide they are not able to make it to the end destination due to sea ice, they may change where the trip ends and then re-direct the charter flight accordingly, at no cost to guests. This can also affect the starting location of the next voyage.

ITINERARY

DAY 1: Arrive Nuuk, Greenland

Your journey begins in Nuuk, Greenland’s vibrant capital city and home to the country’s newest airport. As Greenland's cultural and economic hub, Nuuk blends modern life with rich history and stunning natural beauty. With a population of under 20,000 people, it's one of the smallest capital cities in the world, offering a unique mix of contemporary architecture and traditional Inuit culture. After your (optional) charter flight from Toronto, Canada, you'll transfer to the ship by zodiac.



DAY 2: Sisimiut Coast - Day 2 & 3

Explore West Greenland’s complex coastal waterways that include small communities, glaciers, islands, and fjords against a towering mountain backdrop, with plentiful opportunities for hiking and Zodiac cruising. Learn about the Saqqaq, Dorset, Thule, and modern Inuit cultures that have called the Sisimiut region home for the past 4,500 years. The waters are relatively warm here, due to the West Greenland Current and the subarctic location.



DAY 4: Ilulissat

Experience the remarkable beauty of Ilulissat Icefjord, renowned for its enormous icebergs. Ilulissat means “iceberg”—an apt name for this site at the outlet of the Sermeq Kujalleq glacier. It is a UNESCO World Heritage Site and the source of many of the icebergs in the North Atlantic. Marvel at the sheer grandeur of the towering ice formations as you take a stroll along the boardwalk—truly a sight to behold! Visit the town, with its captivating museums, charming cafes, craft shops, and bustling fishing harbour. Be sure to make your way to the Ilulissat Icefjord Centre, where you can delve into the fascinating narratives surrounding the ice and gain a deeper appreciation for this awe-inspiring natural wonder.



TRIP CODE

ACADEINP

DEPARTURE

26/08/2026

DURATION

17 Days

LOCATIONS

Greenland & Canadian Arctic



THE ARCTIC - INTO THE NORTHWEST PASSAGE | EXPLORIS ONE

DAY 5: Western Greenland

Exploring by ship and Zodiac along the west coast of Greenland, we have numerous options for expedition stops, to make the most of weather and wildlife conditions. Whether you're setting foot on land, cruising by Zodiac, or out on the ship's deck, you'll have plenty of chances to learn alongside expert geologists, naturalists, and marine biologists. With Inuit expedition team members at your side, you'll gain an intimate perspective on the abundant flora and fauna you encounter. Take a moment to savour the tranquility and absorb the knowledge and stories shared by Inuit cultural educators, which will deepen your connection to this breathtaking landscape. Departing Greenland, we cross Baffin Bay toward Nunavut.



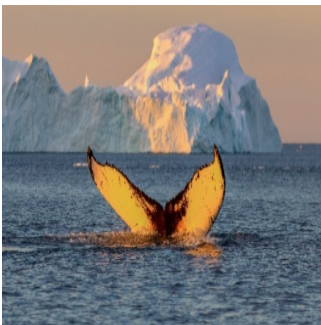
DAY 6: Davis Strait

As we sail toward Nunavut, our expedition team will deepen your understanding of the Arctic. This is an excellent time to enjoy workshops, watch a documentary, or get out on deck. Keep your binoculars ready for minke and humpback whales, as well as the seabirds that are sure to mark our passage. Take the unique opportunity to learn from Inuit in their homeland, gaining a better understanding of the daily lives of the regions we visit. Enjoy cultural performances and maybe even participate in Inuit games, or sample country food. Through shared experiences and interactions, develop a deep appreciation for the region's vibrant culture and gain a connection to the stunning landscapes we traverse.



DAY 7: High Arctic

Enjoy the warmth of an Inuit welcome as drum dancers, throat singers, and cultural ambassadors share their stories, songs, and connections to the land. Explore the beautiful surroundings of an Arctic hamlet, get to know local residents and learn about their ways of life, and have the opportunity to purchase carvings and handicrafts to bring back home.



TRIP CODE

ACADEINP

DEPARTURE

26/08/2026

DURATION

17 Days

LOCATIONS

Greenland & Canadian Arctic



THE ARCTIC - INTO THE NORTHWEST PASSAGE | EXPLORIS ONE

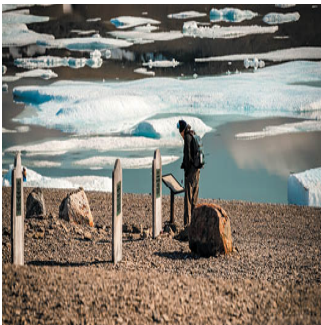
DAY 8: Tallurutiup Imanga (Lancaster Sound) - Day 8 & 9

We will spend ample time exploring Tallurutiup Imanga (Lancaster Sound), one of the newest National Marine Conservation Areas in Nunavut. Narwhal, beluga, and bowhead whales transit and feed in this area. Cruise by ship and Zodiac in search of wildlife with expert biologists and ecologists. Learn more about the crucial role Inuit play in conserving the vibrant biodiversity of these waterways and the enduring connection between the ocean and Inuit. On the northern border of Tallurutiup Imanga lies Devon Island, the largest uninhabited island on Earth at over 50,000 square kilometres. Flat-topped mountains, glacial valleys, and a substantial ice cap give Devon Island its unique character. We will hike the tundra, cruise a glacier face, and seek wildlife from the ship and onshore.



DAY 10: Beechey Island

In 1845, Sir John Franklin set out from England with the HMS Erebus and HMS Terror, attempting to sail through the Northwest Passage. His crew overwintered at Beechey Island, where three of his men died. Numerous search parties later used Beechey as a depot and rendezvous. Amundsen, Bernier, and Larsen visited Beechey. Thomas Morgan of the HMS Investigator was buried here in 1854 alongside Franklin’s men. The graves and ruins of Northumberland House are a haunting memorial.



DAY 11: Peel Sound

Peel Sound, once traversed by the Franklin expedition on its route south, presents numerous wildlife and exploratory opportunities. As we sail through this region, we'll enter prime polar bear territory where we'll be on the lookout for good spotting opportunities. The area is also home to muskoxen, belugas, and other wildlife, making every moment a potential discovery. Depending on ice conditions, we may make expedition stops along the way among the spectacular landscapes, a perfect setting for hiking and exploring the geological diversity of the area.



TRIP CODE

ACADEINP

DEPARTURE

26/08/2026

DURATION

17 Days

LOCATIONS

Greenland & Canadian Arctic



THE ARCTIC - INTO THE NORTHWEST PASSAGE | EXPLORIS ONE

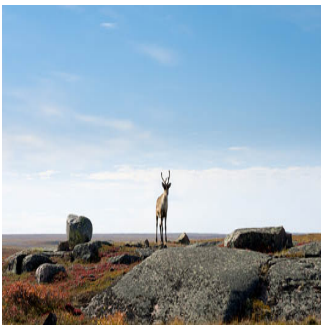
DAY 12: Ikirahaq (Bellot Strait)

Discover the famed Ikirahaq (Bellot Strait), a narrow passage separating Somerset Island from the Boothia Peninsula. As we sail through this two-kilometre-wide waterway, get the unique opportunity to reach the northernmost part of mainland North America. Keep watch for an array of enchanting marine mammals from beluga whales to narwhals and seals. Delve into the region's fascinating history and learn about Joseph René Bellot, French naval officer and Arctic explorer who joined an 1850s expedition in search for Sir John Franklin, who inspired the strait's namesake.



DAY 13: Kitikmeot Region

Navigate the ice-strewn waters of this fabled waterway in search of wildlife. Although this is Nunavut's least-populated region, this area is home to a diverse range of wildlife, both in the sea and on land. Visit a local community where Inuit hosts will share their knowledge of their home and the area's history. Discover the legacy of this important waterway and the captivating story of Roald Amundsen, who overwintered in the bay for two years while searching for the Northwest Passage. Learn more about the triumphs of explorers like Amundsen and the vital role that Inuit knowledge played in successful crossings.



TRIP CODE

ACADEINP

DEPARTURE

26/08/2026

DURATION

17 Days

LOCATIONS

Greenland & Canadian Arctic



THE ARCTIC - INTO THE NORTHWEST PASSAGE | EXPLORIS ONE

DAY 17: Disembark in Kugluktuk

Today marks the completion of your incredible journey through the Northwest Passage—an achievement few can claim. Arriving in Kugluktuk, take pride in having traversed one of the world’s most historic and storied waterways, following in the wake of legendary explorers while forging your own unforgettable path through the Arctic. Located at the mouth of the Coppermine River, Kugluktuk is the westernmost community in Nunavut. Known for many years as Coppermine, the community reverted to its original Inuinnaqtun name—meaning “place of moving waters”—on January 1st, 1996. Iqaluktuuttiaq (Cambridge Bay), NU, is an alternate disembarkation point, and may be used based on sea and weather conditions. After disembarkation, transfer to the airport for your (optional) charter flight to Yellowknife, Canada.
*Please note: Cruise itinerary is subject to change depending on weather conditions, ice conditions and other factors.



TRIP CODE

ACADEINP

DEPARTURE

26/08/2026

DURATION

17 Days

LOCATIONS

Greenland & Canadian Arctic



INCLUSIONS & DETAILS

Accommodation

Cabin On board a Ship

THE ARCTIC - INTO THE NORTHWEST PASSAGE | EXPLORIS ONE

Optional Charter Flight Information & Cost:
 Northbound Charter Flight Toronto, ON to Nuuk, Greenland. Early-morning departure.
 Price: \$1,595 USD *Cost subject to change*
 Southbound Charter Flight: Kugluktuk (Coppermine), NU, Canada to Yellowknife, NU, Canada. Evening arrival. Price: \$1,100 USD. *Cost subject to change*
 Please note the charter flight costs are **NOT** included in the advertised cruise price. Please contact your booking agent to include charter flights.

- INCLUSIONS**
- Cabin aboard the Exploris One
 - All meals on board
 - 24/7 free (alcoholic and non-alcoholic) beverages included
 - Applicable taxes and credit card fees
 - Complimentary expedition jacket
 - Special access permits, entry, and park fees
 - Expert expedition team
 - Guided activities
 - Sightseeing and community visits
 - All Zodiac excursions
 - Port fees
 - Pre-departure materials
 - Educational program
 - Interactive workshops
 - Evening entertainment
 - Basic Wi-Fi (Please note: travel to remote regions and therefore the connection can be unreliable)

- EXCLUSIONS**
- Optional Charter flights (please see notes for more details)
 - International Flights
 - Group transfers to/from the ship
 - Program enhancements/optional excursions
 - Gratuities
 - Personal expenses
 - Mandatory medical evacuation insurance
 - Additional expenses in the event of delays or itinerary changes
 - Possible fuel surcharges and administrative fees
 - Any pre or post land arrangements

Difficulty Rating 2 (light adventure)

Single Surcharge A limited number of single cabins, with their own designated cabin price, are available. Subject to cabin availability. [Contact Us](#) for more details.

TRIP CODE
ACADEINP
DEPARTURE
26/08/2026
DURATION
17 Days
LOCATIONS
Greenland & Canadian Arctic



THE ARCTIC - INTO THE NORTHWEST PASSAGE | EXPLORIS ONE

Notes	<p>Prices are based on per person, may be based on quad/triple/twin share. Prices are correct at time of publishing but are subject to change at any time. Itinerary is subject to change depending on weather and ice conditions.</p> <p>Optional Charter Flight Information & Cost: Northbound Charter Flight Toronto, ON to Nuuk, Greenland. Early-morning departure. Price: \$1,595 USD. <i>Cost subject to change</i> Southbound Charter Flight: Kugluktuk (Coppermine), NU, Canada to Yellowknife, NU, Canada. Evening arrival. Price: \$1,100 USD. <i>Cost subject to change</i> Please note the charter flight costs are NOT included in the advertised cruise price. Please contact your booking agent to include charter flights. <i>Charter flight packages are highly recommended for this region, even for European-based guests, due to the variable ice conditions in the high Canadian Arctic. This is especially true for the western end of the Northwest Passage trips. If the operator and captain decide they are not able to make it to the end destination due to sea ice, they may change where the trip ends and then re-direct the charter flight accordingly, at no cost to guests. This can also affect the starting location of the next voyage.</i></p>
	<p>Price Dependent upon</p> <p>Departure date, fuel surcharges, cabin category, currency fluctuations, seasonality and availability.</p>

TRIP CODE

ACADEINP

DEPARTURE

26/08/2026

DURATION

17 Days

LOCATIONS

Greenland & Canadian Arctic



SUSTAINABILITY